

Pasco Elementary and Pasco Middle Schools
School Zone Redesign



Quantities

Item	Quantity	Signs to order
School Speed Limit 15 w/ Beacon	6	S5-1 and FTP-38-22, add beacon
School Crossing Ahead	21	S1-1 and W16-9P
School Crossing w/ Arrow	20	S1-1 and W16-7P(L)
End School Zone	6	S5-2
School Pavement Marking	6	
Proposed Crosswalk	11	

General Notes

- All school signs must be yellow-green in color.
- Suggested crosswalks should be the special emphasis type.
- All indicated locations are approximate and may need to be adjusted for constructability. Standard minimum distances are noted where appropriate.
- While some proposed sidewalk extensions are shown, sidewalk additions are generally outside of the scope of this document.
- Proposed school signs and pavement markings are to replace existing signs and pavement markings. Proposed crosswalks are in addition to currently existing crosswalks. No crosswalks are proposed to be removed.
- The following link has information on the names of the school zone signs used:
[Figure 7B-1 Long Description - MUTCD 2009 Edition - FHWA \(dot.gov\)](#)

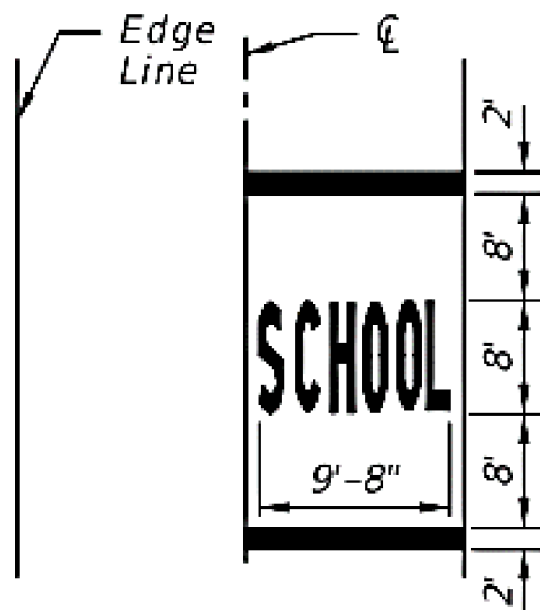


Figure 1: Standard School Zone Pavement Marking Details

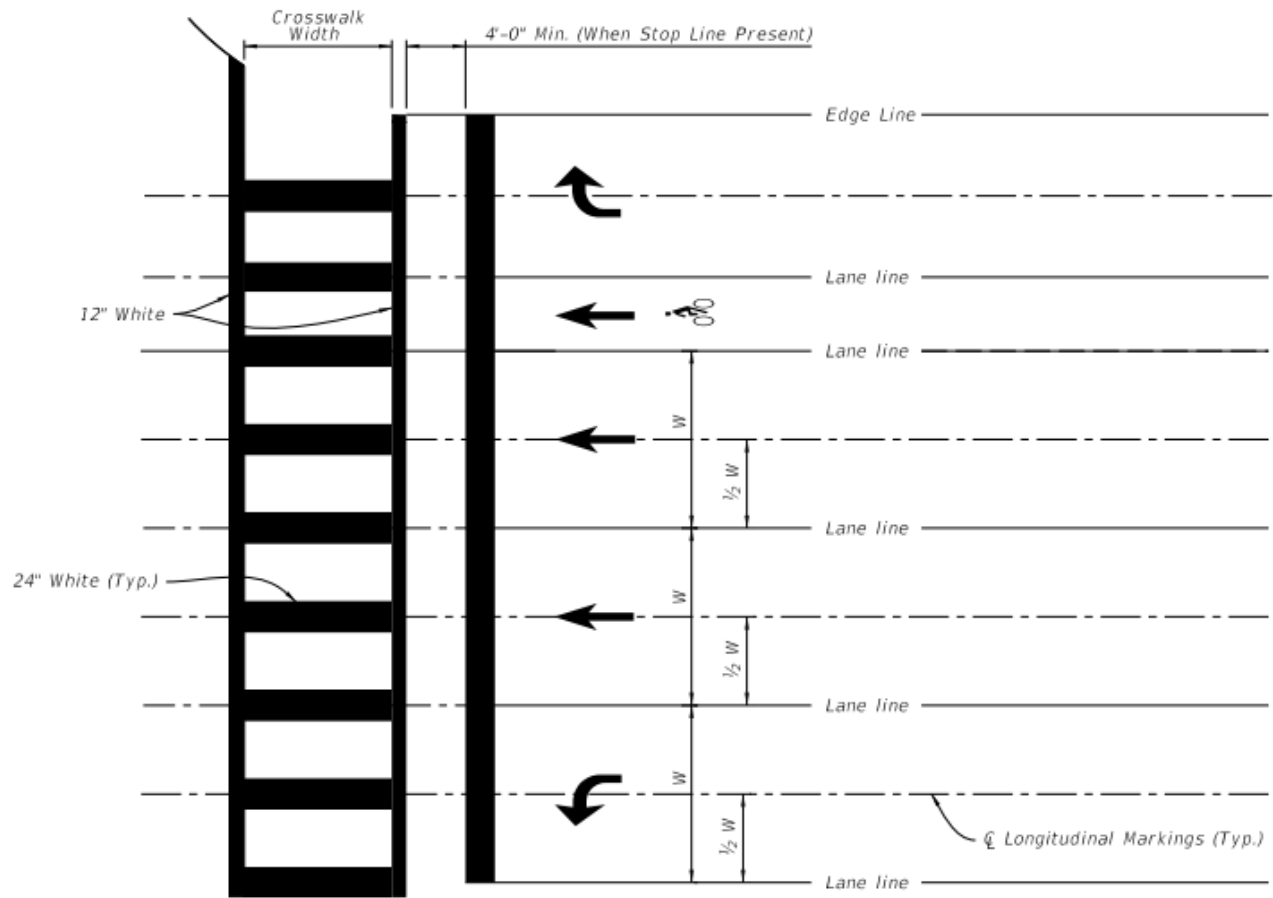
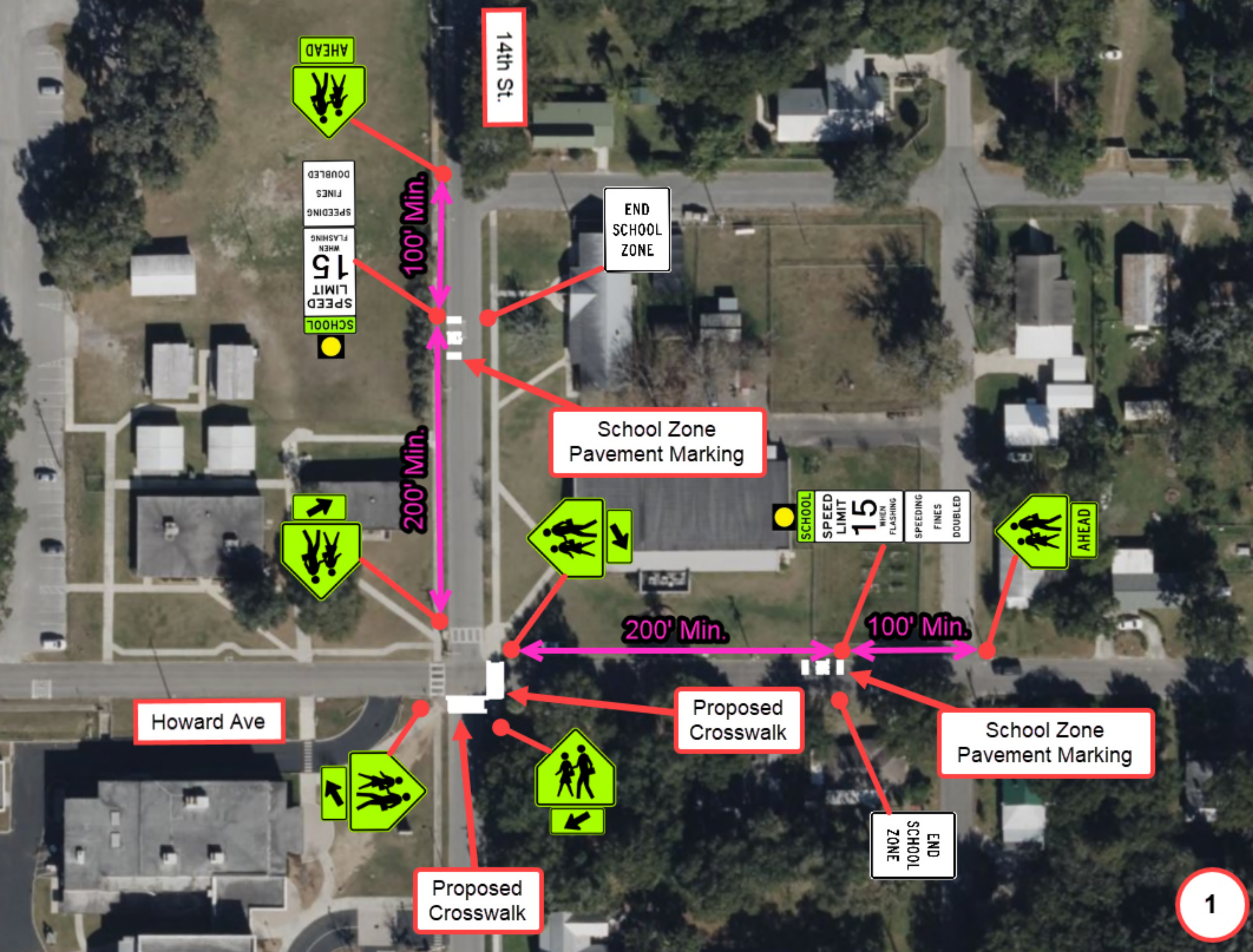
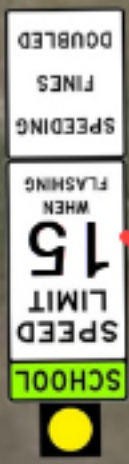


Figure 2: Special Emphasis Crosswalk Details



14th St.

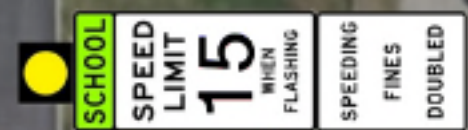


100' Min.

END SCHOOL ZONE

School Zone Pavement Marking

200' Min.



200' Min.

100' Min.

Howard Ave

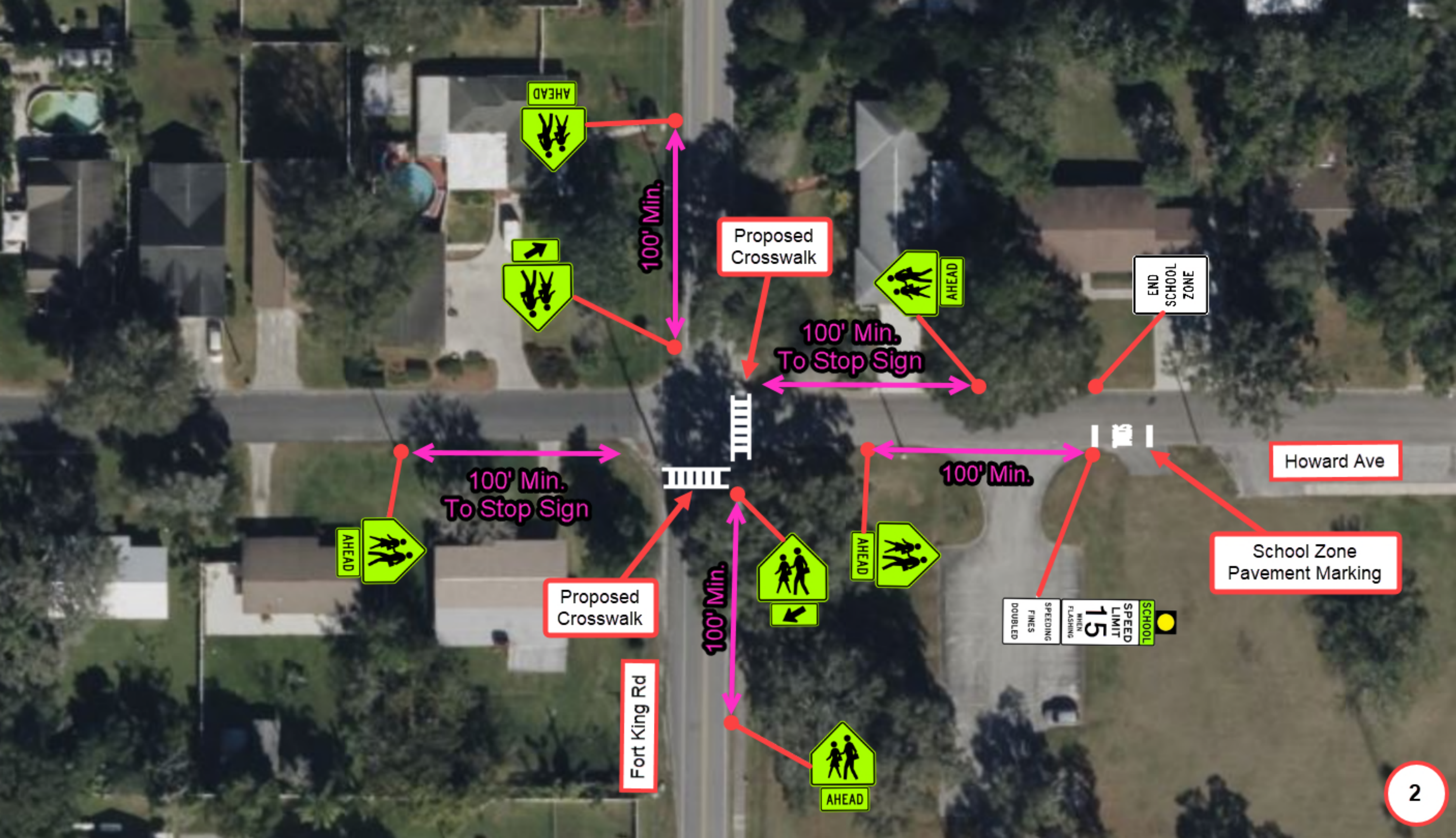
Proposed Crosswalk

School Zone Pavement Marking



END SCHOOL ZONE

Proposed Crosswalk



Proposed Crosswalk

100' Min.



100' Min. To Stop Sign

END SCHOOL ZONE

Howard Ave

100' Min. To Stop Sign



Proposed Crosswalk

Fort King Rd

100' Min.

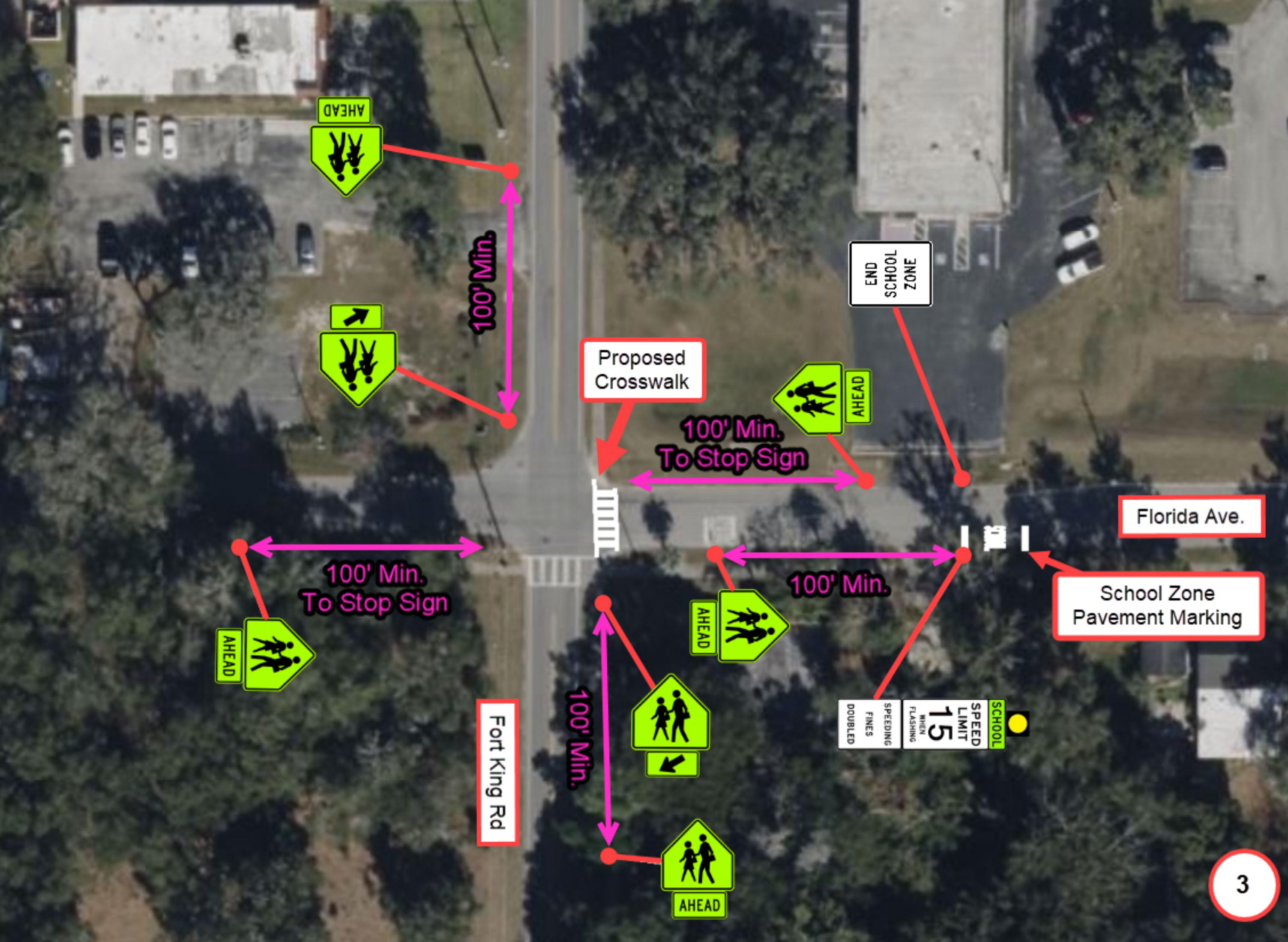


100' Min.

School Zone Pavement Marking



AHEAD



100' Min.

Proposed Crosswalk

100' Min. To Stop Sign

END SCHOOL ZONE

Florida Ave.

School Zone Pavement Marking

100' Min. To Stop Sign



100' Min.

Fort King Rd

100' Min.



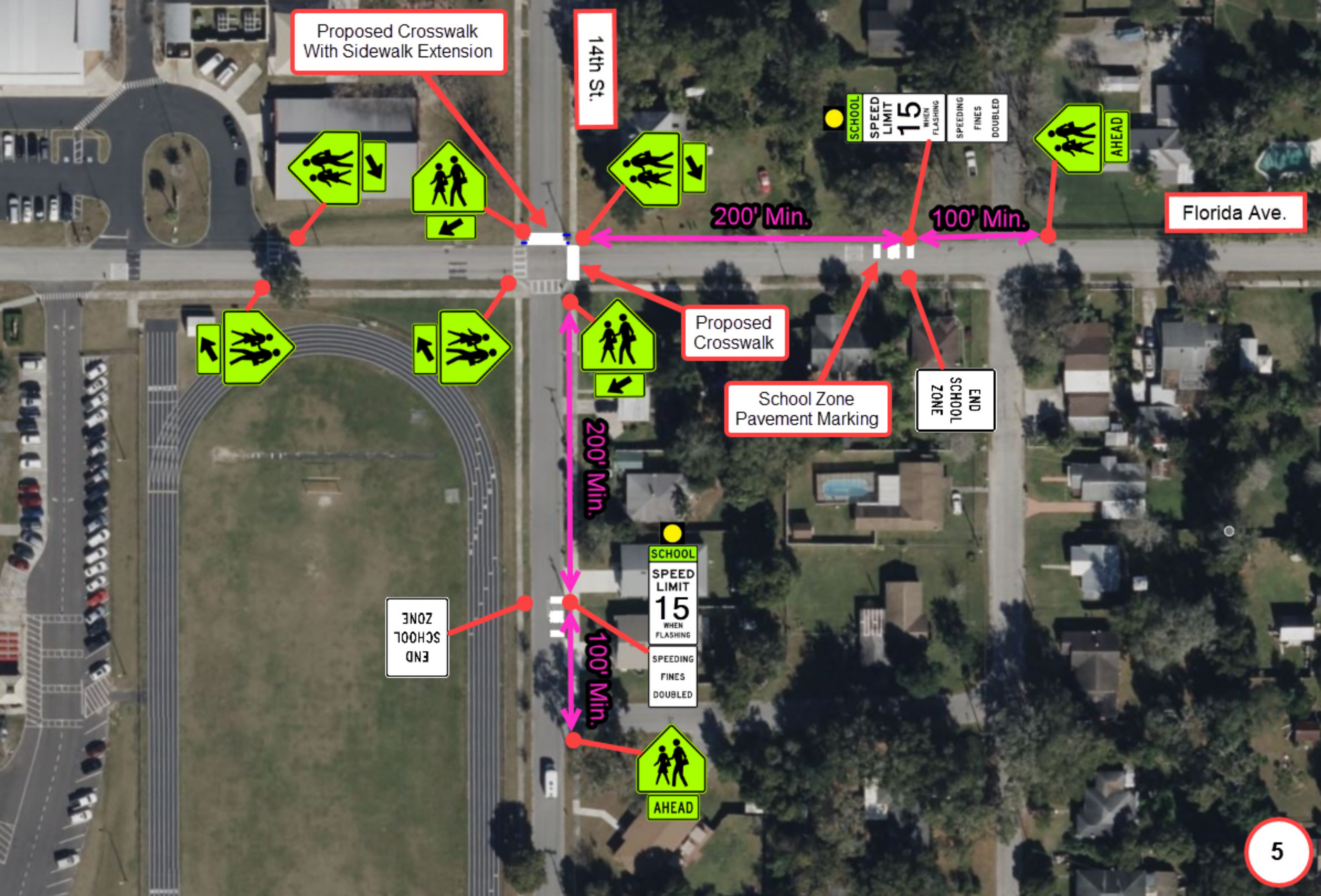
SCHOOL SPEED LIMIT 15 WHEN FLASHING SPEEDING FINES DOUBLED



Proposed Sidewalk
Connect crosswalk to parking lot if feasible

Florida Ave.





Proposed Crosswalk With Sidewalk Extension

14th St.

Florida Ave.

200' Min.

100' Min.

Proposed Crosswalk

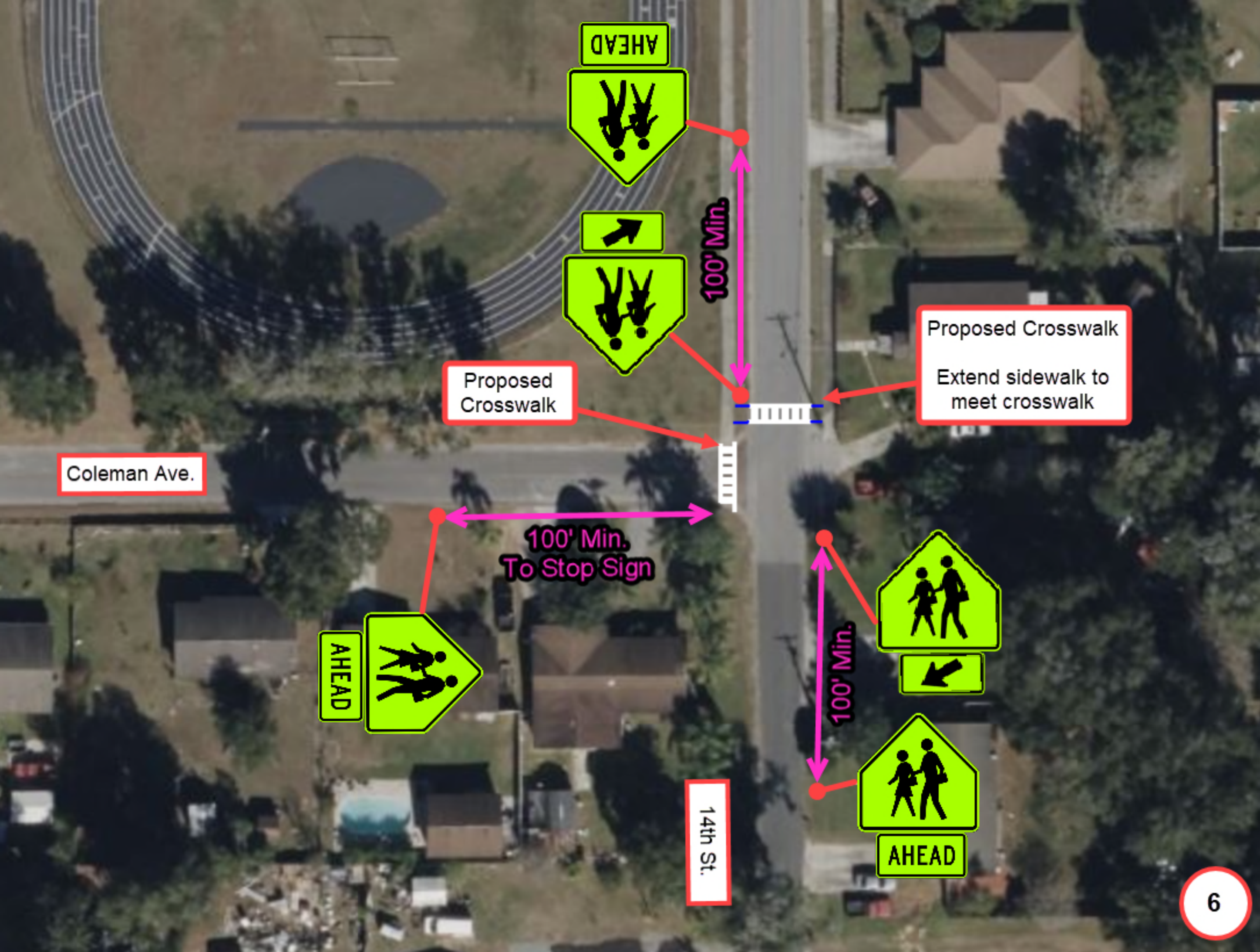
School Zone Pavement Marking

END SCHOOL ZONE

200' Min.

END SCHOOL ZONE

100' Min.



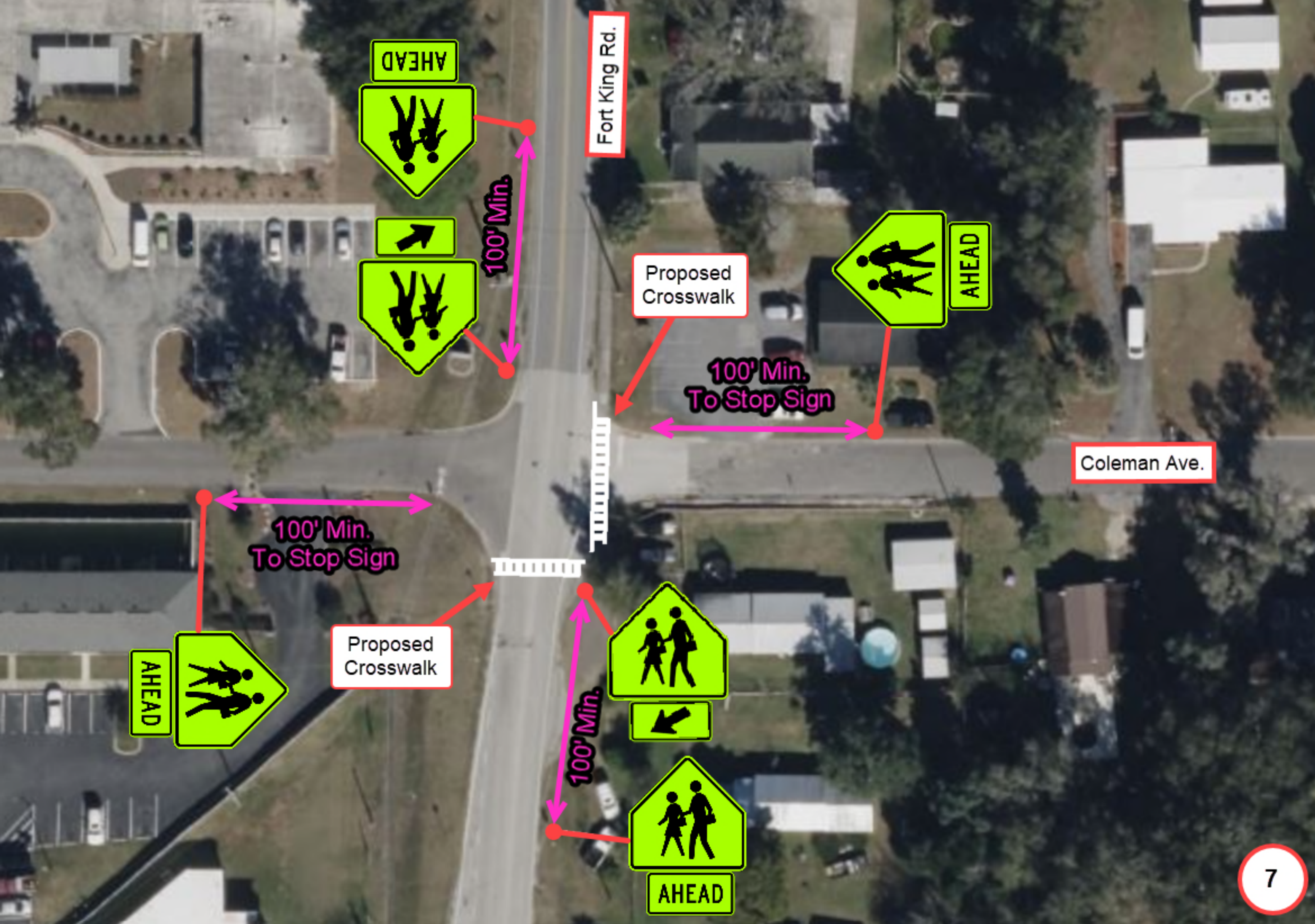
Coleman Ave.

Proposed Crosswalk

Proposed Crosswalk
Extend sidewalk to meet crosswalk

100' Min.
To Stop Sign

14th St.



Fort King Rd.

Proposed Crosswalk

Coleman Ave.

AHEAD

AHEAD

AHEAD

AHEAD

100' Min.
To Stop Sign

100' Min.
To Stop Sign

100' Min.

100' Min.